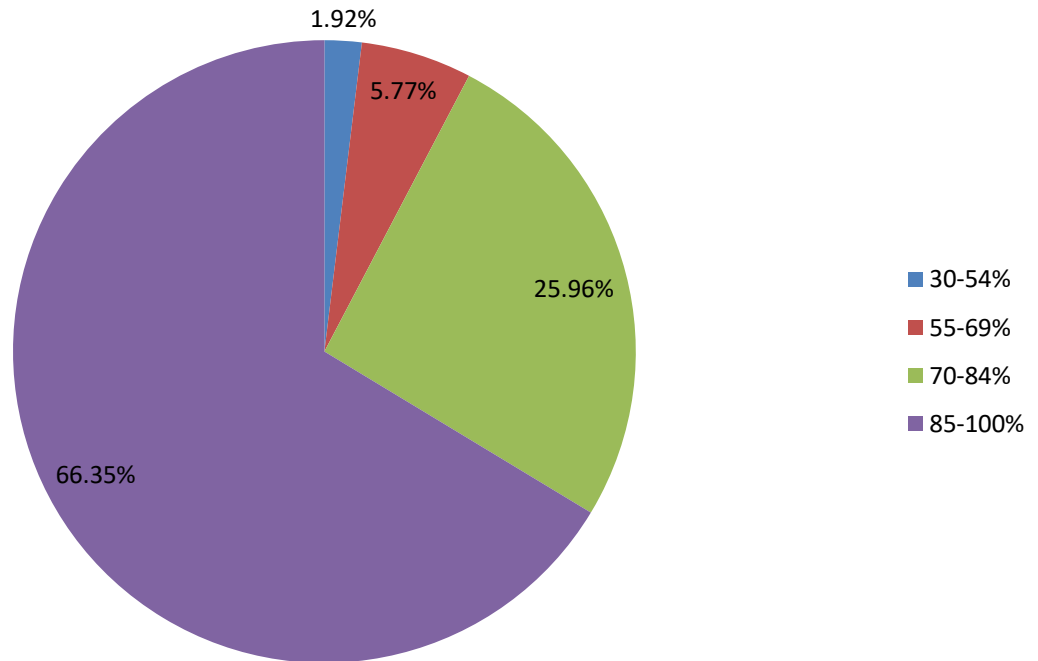


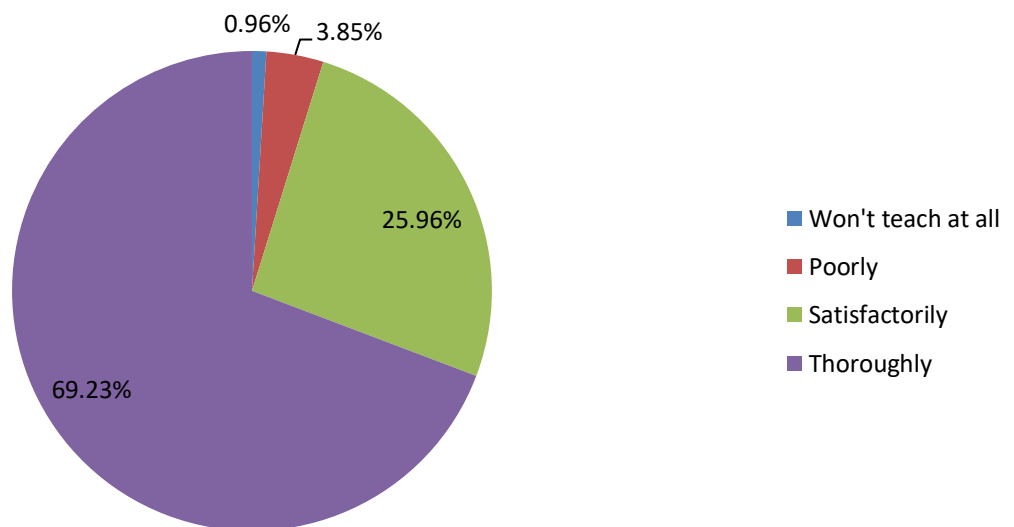
Report on Students Satisfaction Survey (SSS) 2019-2020

IQAC conducted Student Satisfaction Survey (SSS) among the students of B.H. College, Howly for the indicator 2.7.1 under Criterion II of Teaching-Learning and Evaluation. The students were sent a questionnaire to fill up and the responses were analysed and presented.

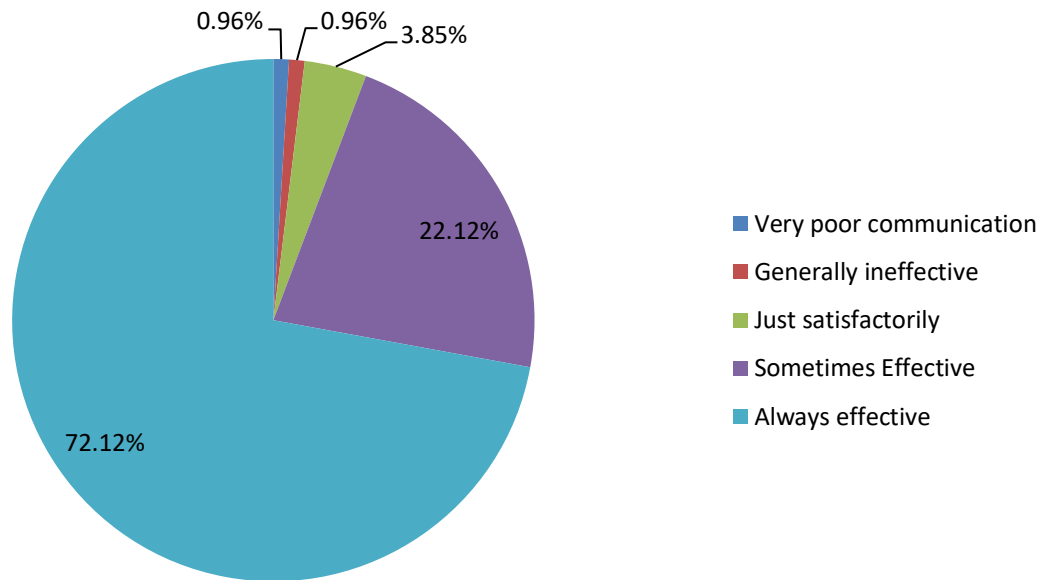
1. How much of the syllabus was covered in the class?



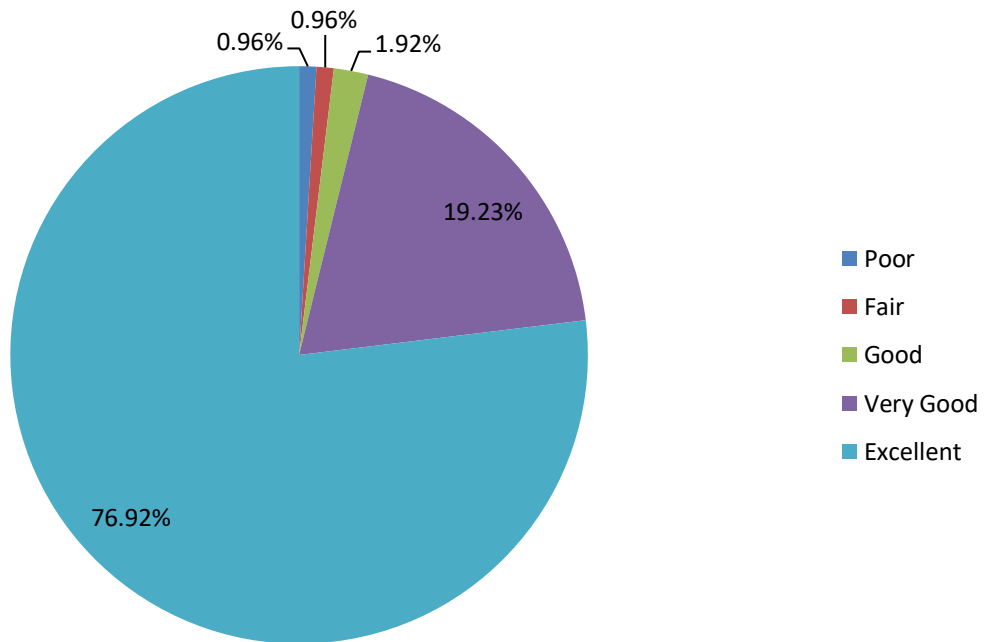
2. How well did the teachers prepare for the classes?



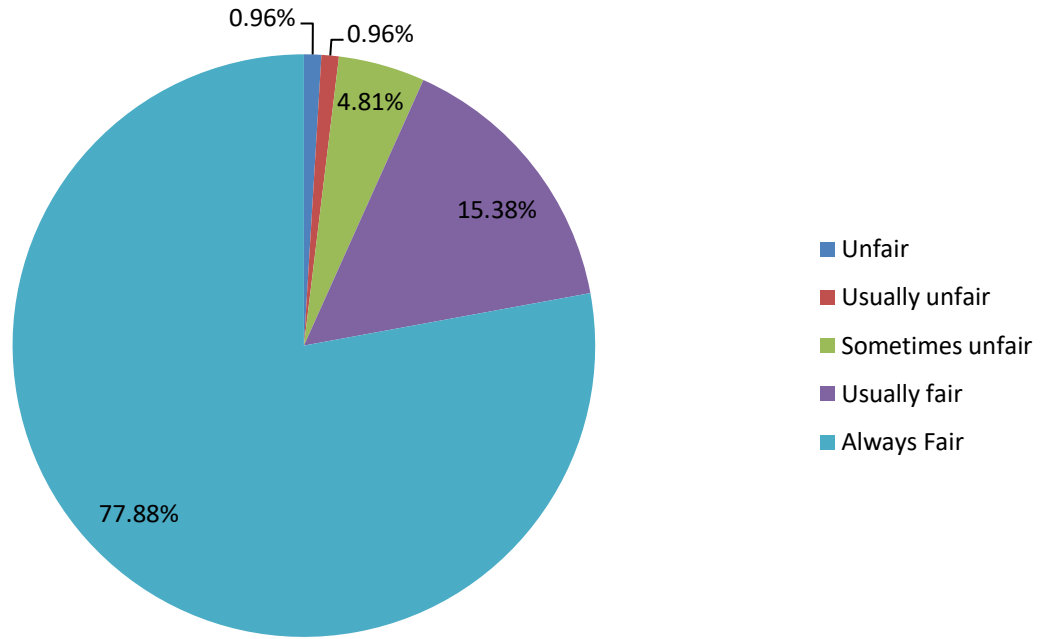
3. How well were the teachers able to communicate?



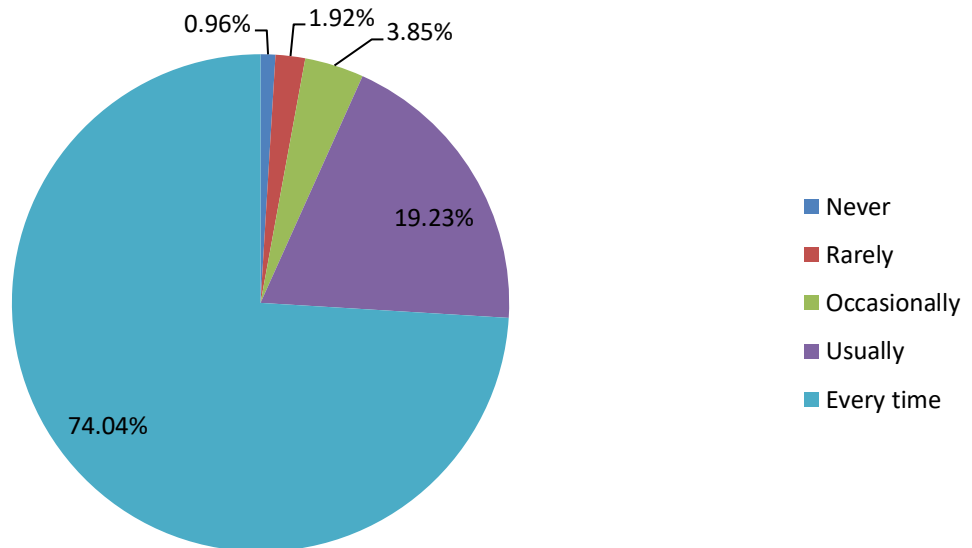
4. The teacher's approach to teaching can best be described as



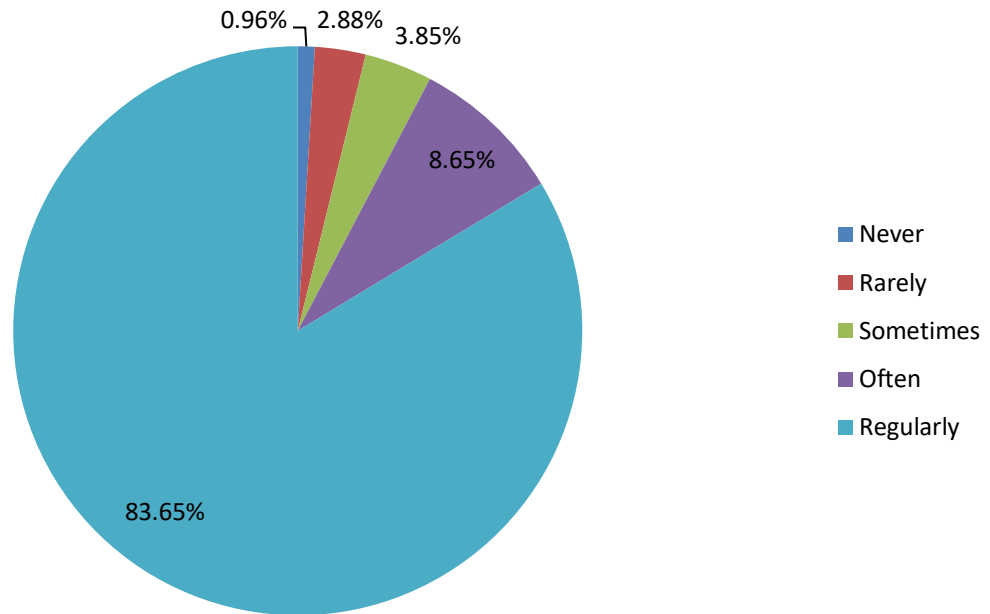
5. Fairness of the internal evaluation process by the teachers.



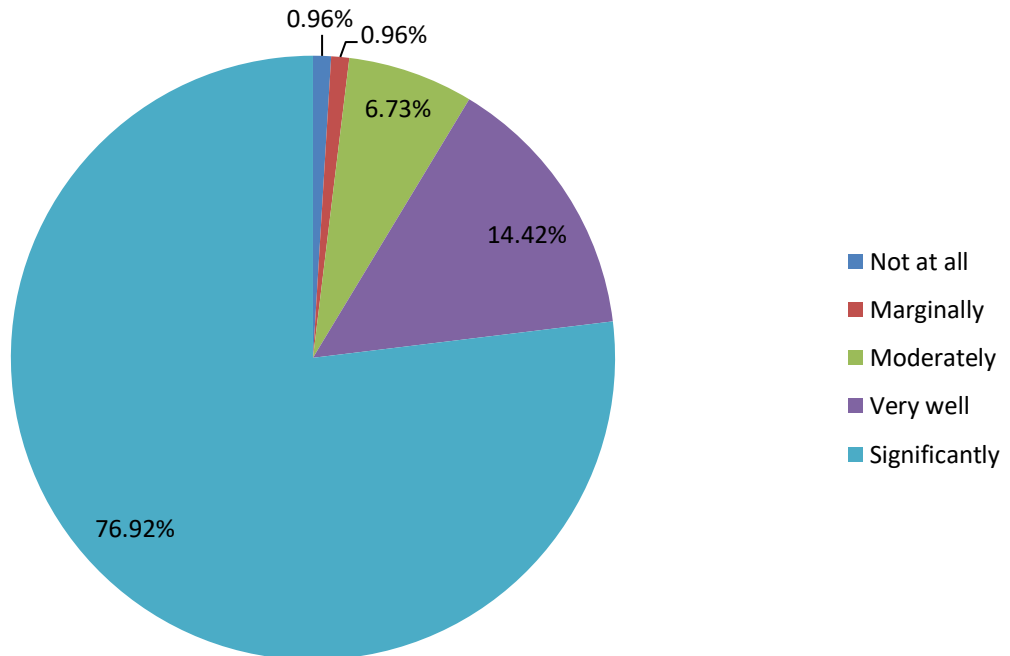
6. Was your performance in assignments discussed with you?



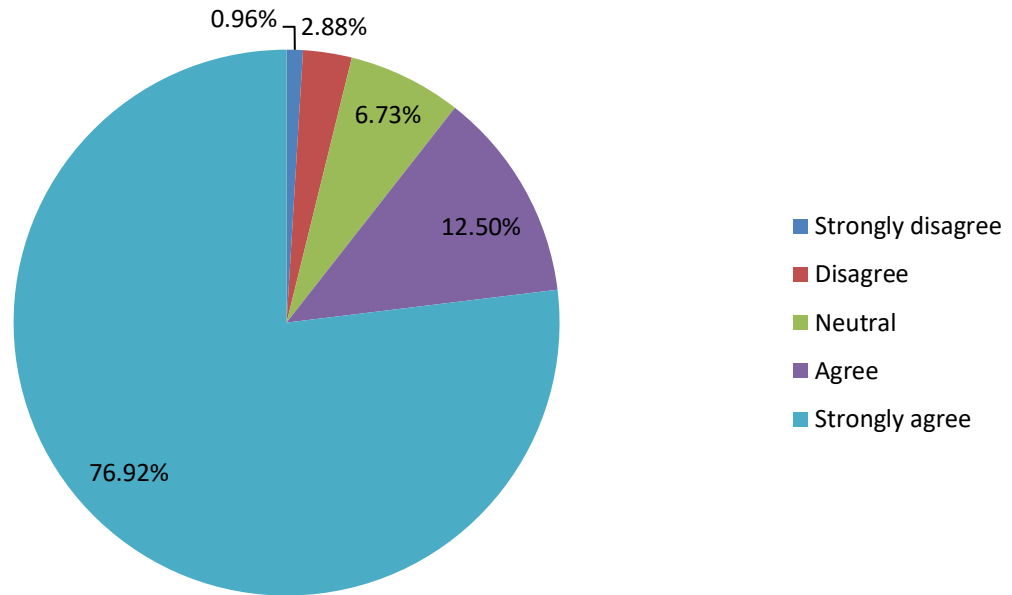
7. The institute takes active interest in promoting internship, student exchange, field visit opportunities for students.



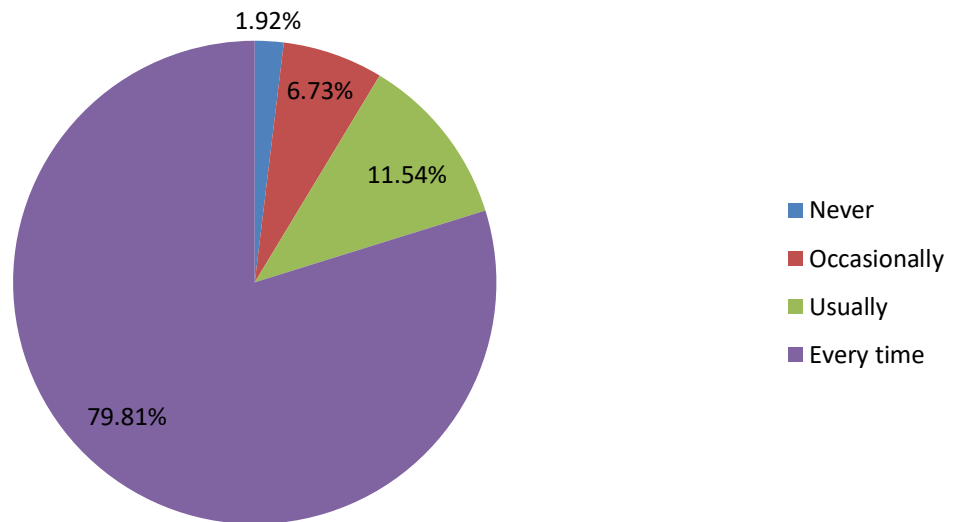
8. The teaching and mentoring process in your institution facilitates you in cognitive, social and emotional growth.



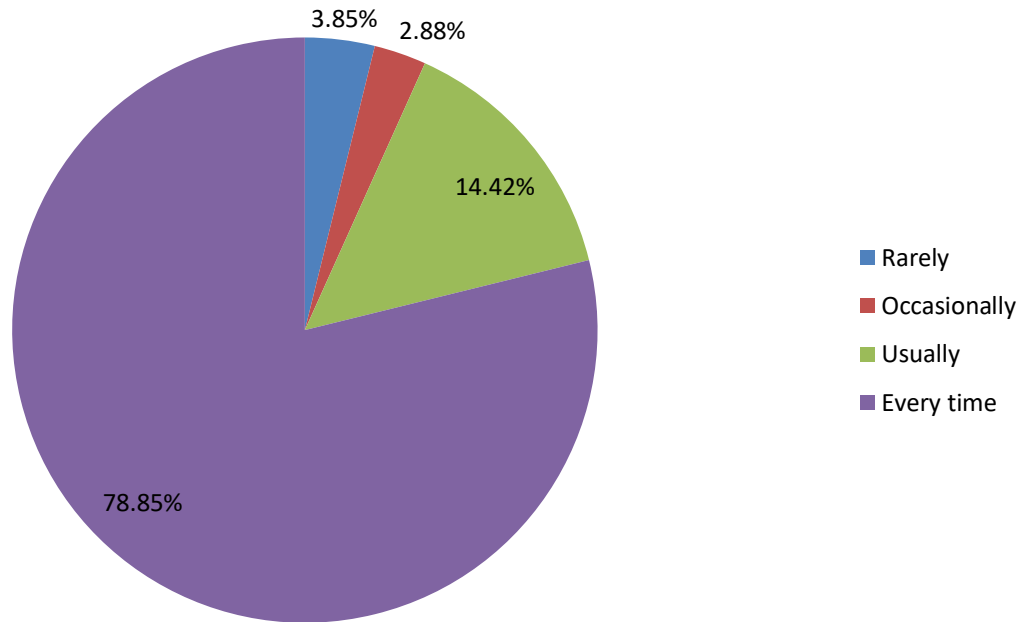
9. The institution provides multiple opportunities to learn and grow.



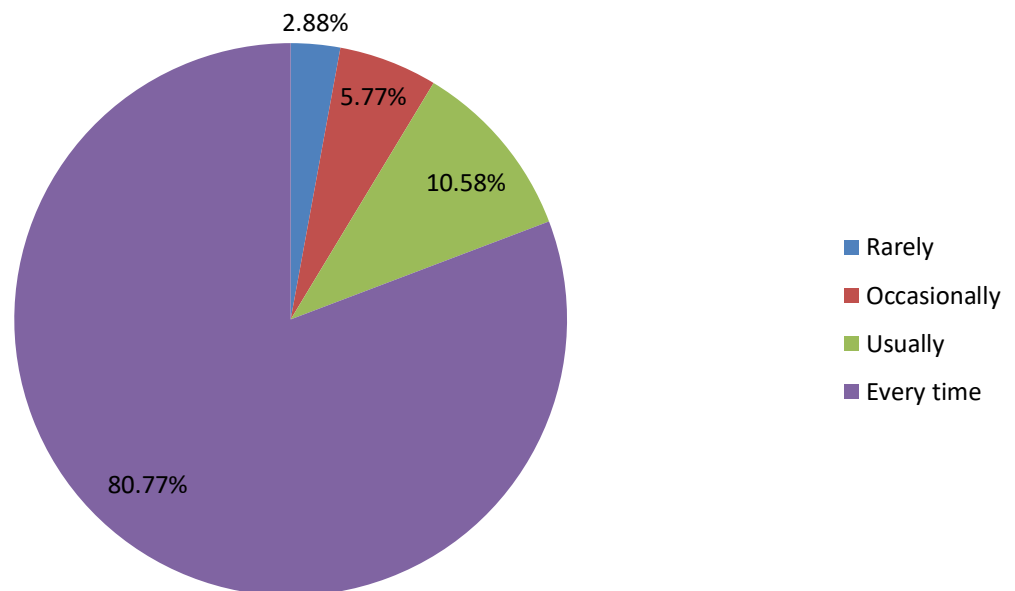
10. Teachers inform you about your expected competencies, course outcomes and programme outcomes.



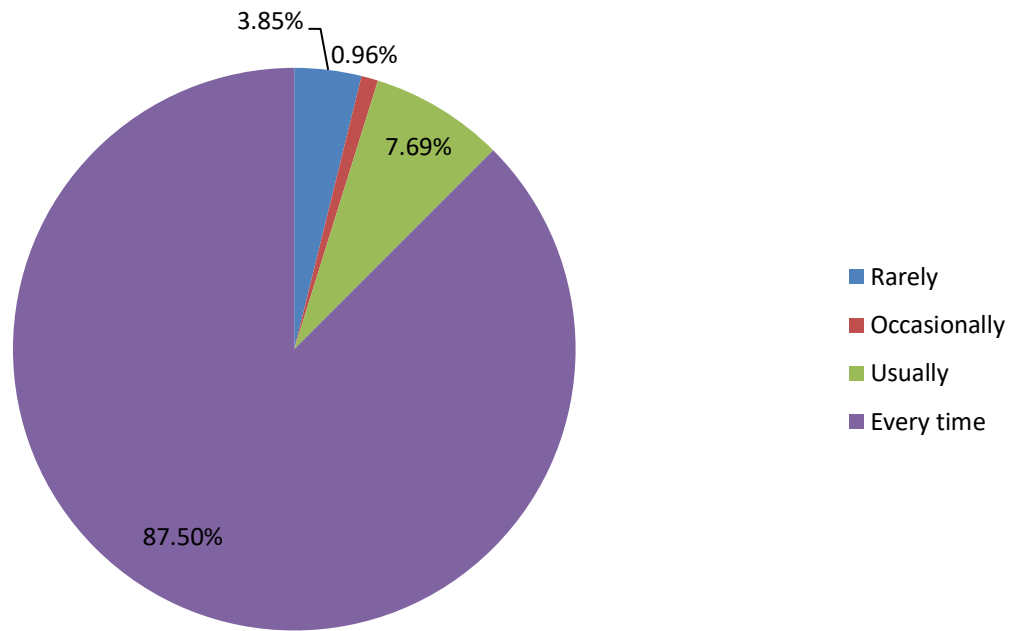
11. Your mentor does a necessary follow-up with an assigned task to you.



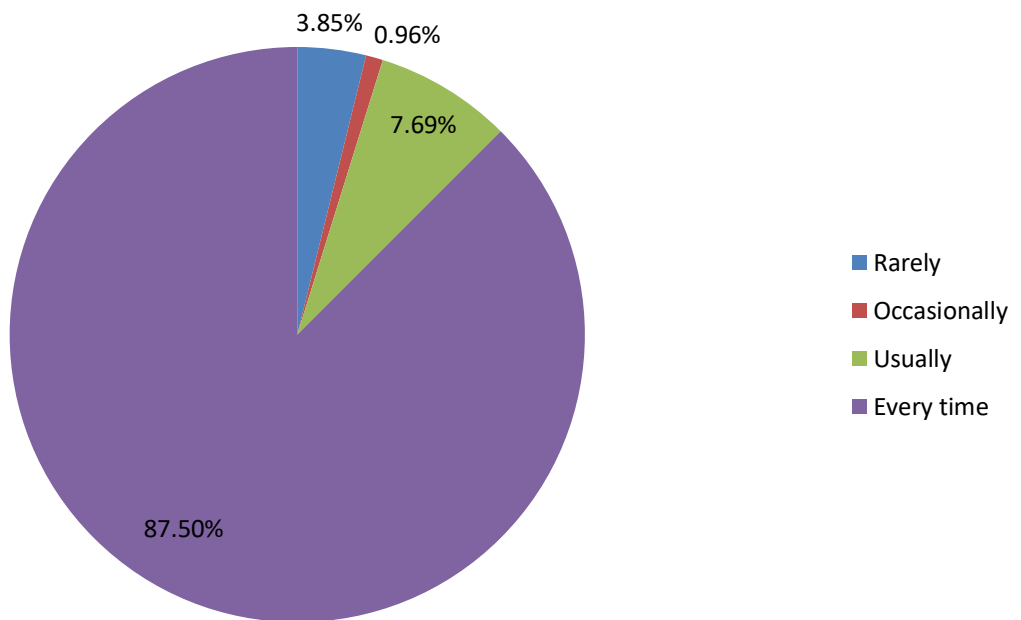
12. The teachers illustrate the concepts through examples and applications.



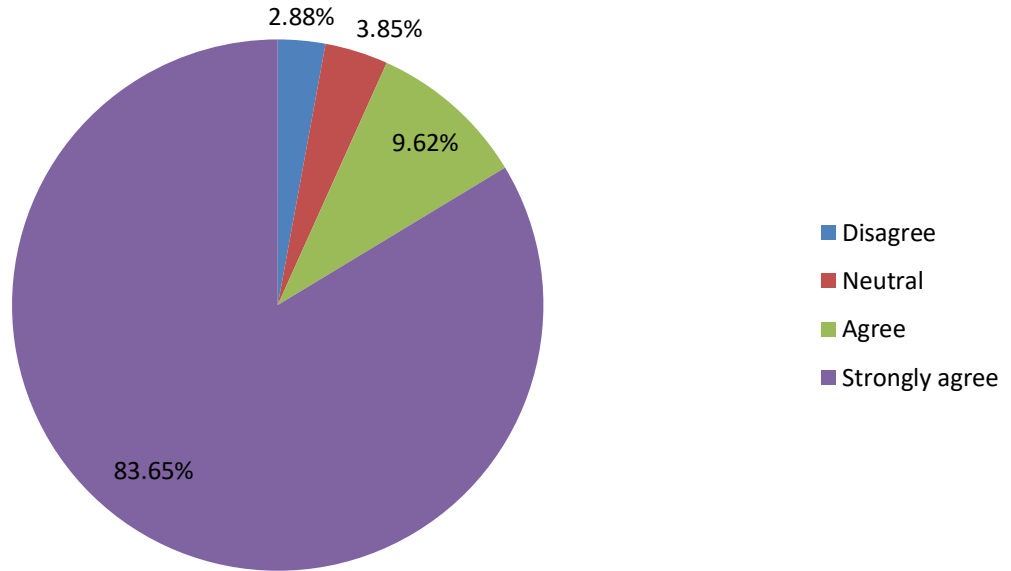
13. The teachers identify your strengths and encourage you with providing right level of challenges.



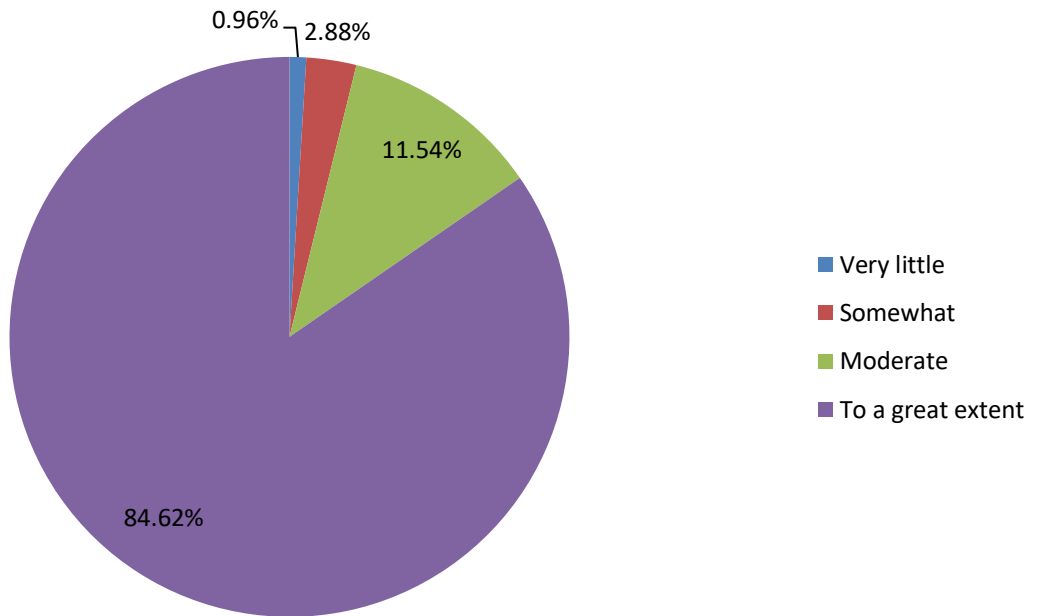
14. Teachers are able to identify your weaknesses and help you to overcome them.



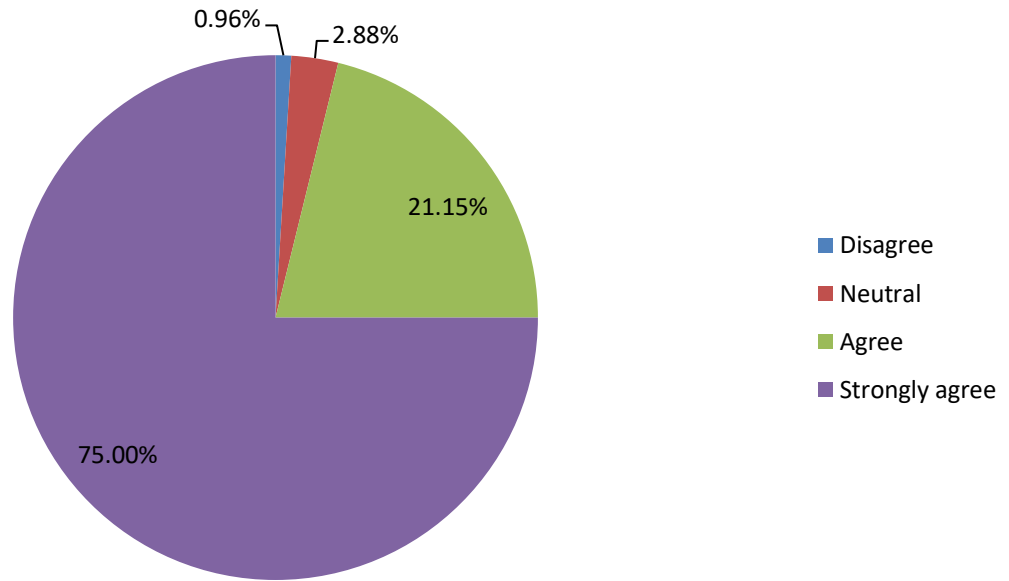
15. The institution makes effort to engage students in the monitoring, review and continuous quality improvement of the teaching learning process.



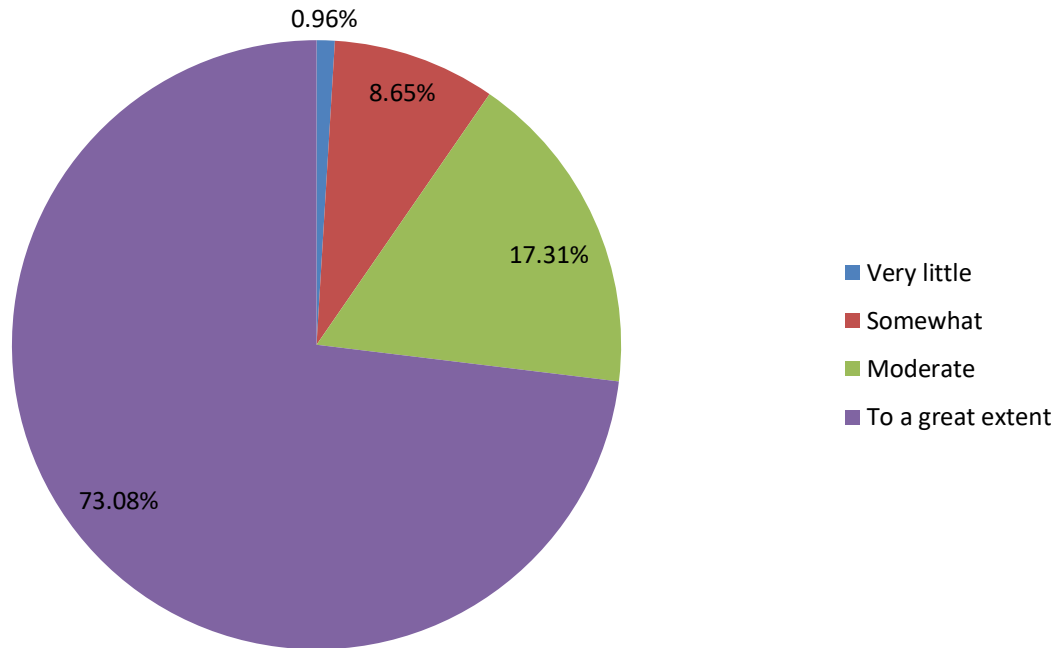
16. The institute/ teachers use student centric methods, such as experiential learning, participative learning and problem solving methodologies for enhancing learning experience



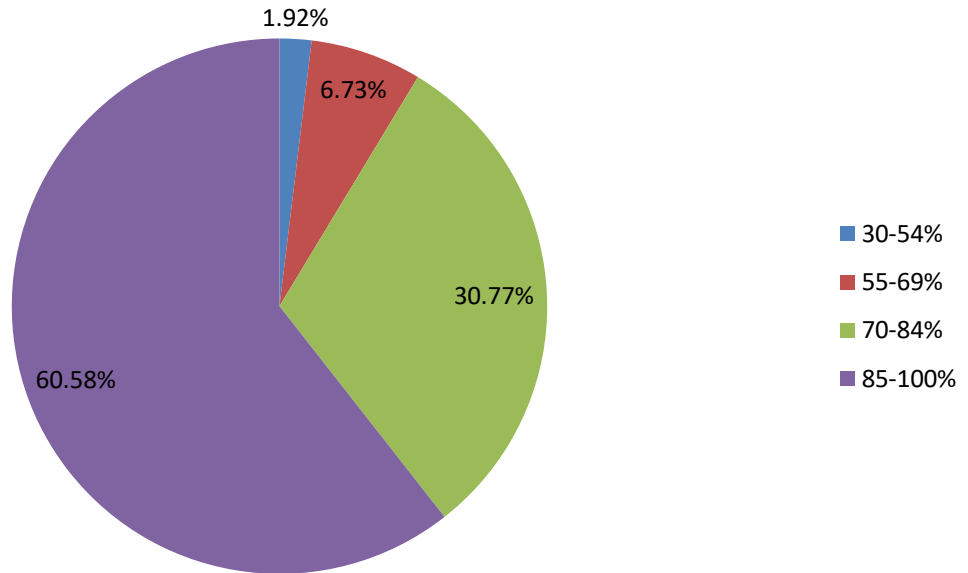
17. Teachers encourage you to participate in extracurricular activities.



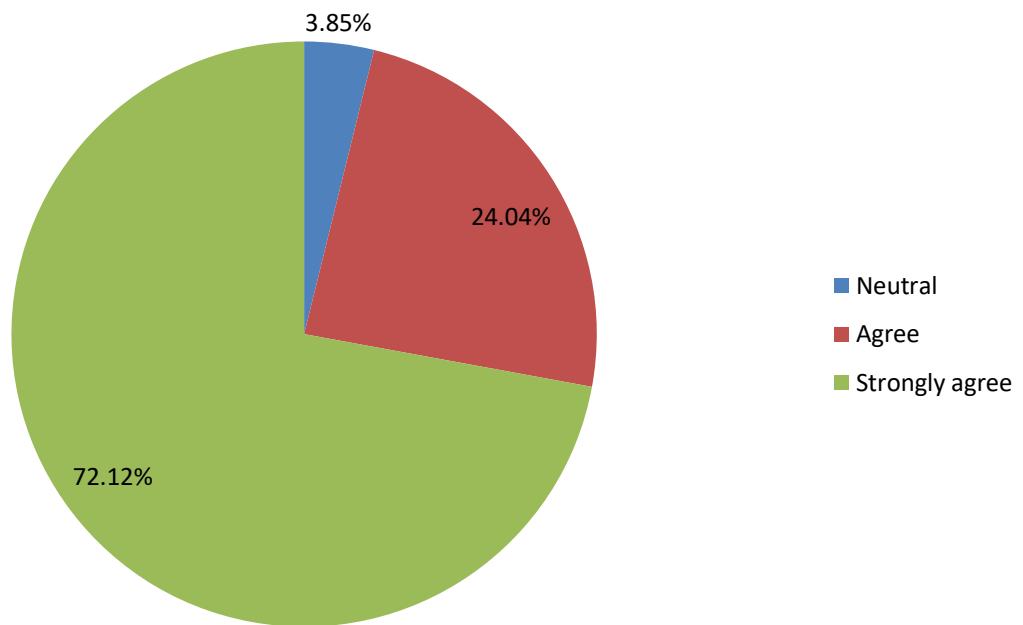
18. Efforts are made by the institute/ teachers to inculcate soft skills, life skills and employability skills to make you ready for the world of work.



19. What percentage of teachers use ICT tools such as LCD projector, Multimedia, etc. while teaching.



20. The overall quality of teaching-learning process in your institute is very good.



21. Give three observation / suggestions to improve the overall teaching - learning experience in your institution.

- Encourage and help students to prepare and appear for competitive examinations.
- Increase number of field trips and hands on training/internship for various courses.
- More focus on improving soft skills of the students in order for them to be able to communicate the knowledge more effectively.

Mean scores of the SSS questions.

Questions	Mean
1. How much of the syllabus was covered in the class?	3.5673
2. How well did the teachers prepare for the classes?	3.6250
3. How well were the teachers able to communicate?	3.6346
4. The teacher's approach to teaching can best be described as	3.7019
5. Fairness of the internal evaluation process by the teachers.	3.6827
6. Was your performance in assignments discussed with you?	3.6346
7. The institute takes active interest in promoting internship, student exchange, field visit opportunities for students.	3.7115
8. The teaching and mentoring process in your institution facilitates you in cognitive, social and emotional growth.	3.6538
9. The institution provides multiple opportunities to learn and grow.	3.6154
10. Teachers inform you about your expected competencies, course outcomes and programme outcomes.	3.6731
11. Your mentor does a necessary follow-up with an assigned task to you.	3.6827
12. The teachers illustrate the concepts through examples and applications.	3.6923
13. The teachers identify your strengths and encourage you with providing right level of challenges.	3.7788
14. Teachers are able to identify your weaknesses and help you to overcome them.	3.7885
15. The institution makes effort to engage students in the monitoring, review and continuous quality improvement of the teaching learning process.	3.7404
16. The institute/ teachers use student centric methods, such as experiential learning, participative learning and problem solving methodologies for enhancing learning experiences.	3.7981
17. Teachers encourage you to participate in extracurricular activities.	3.7019
18. Efforts are made by the institute/ teachers to inculcate soft skills, life skills and employability skills to make you ready for the world of work.	3.6250
19. What percentage of teachers use ICT tools such as LCD projector, Multimedia, etc. while teaching	3.5000
20. The overall quality of teaching-learning process in your institute is very good.	3.6827